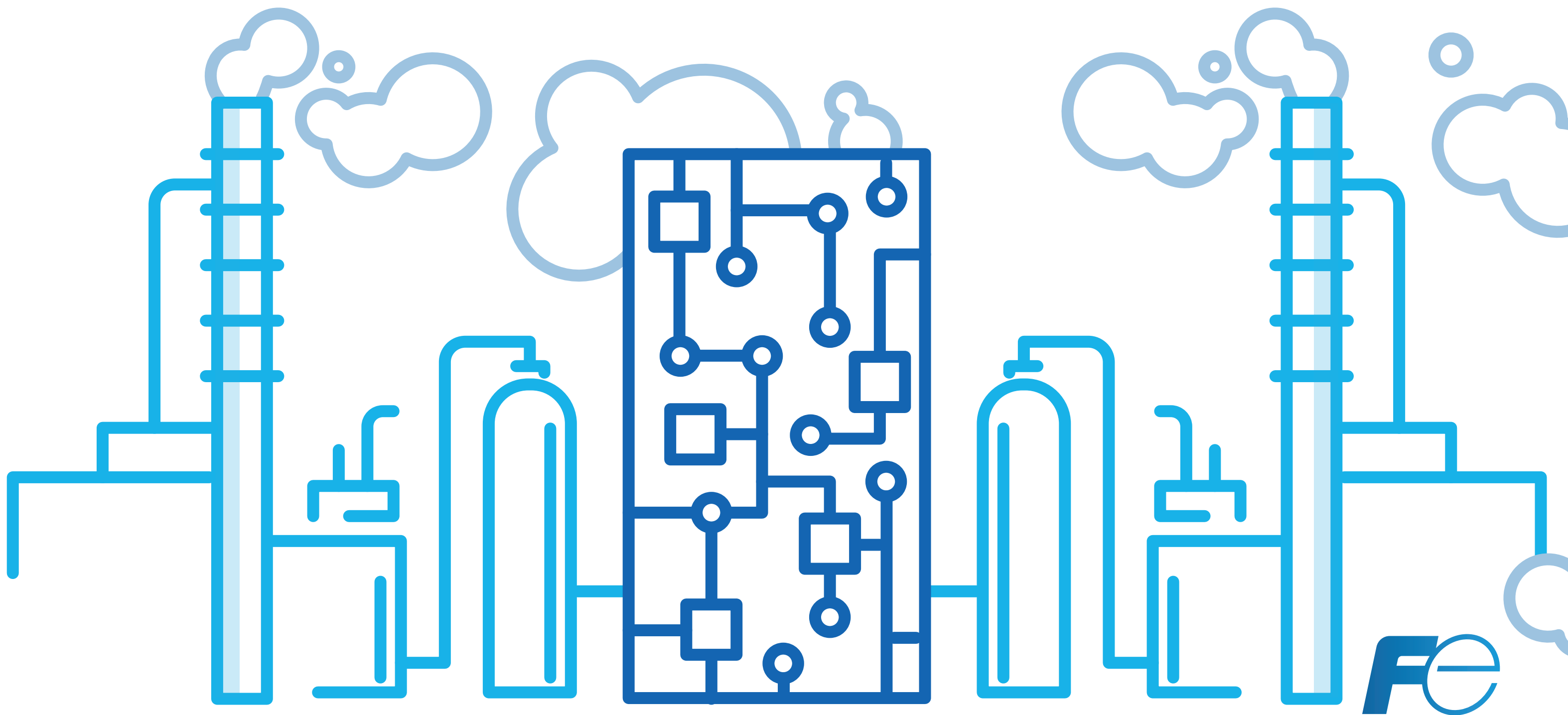
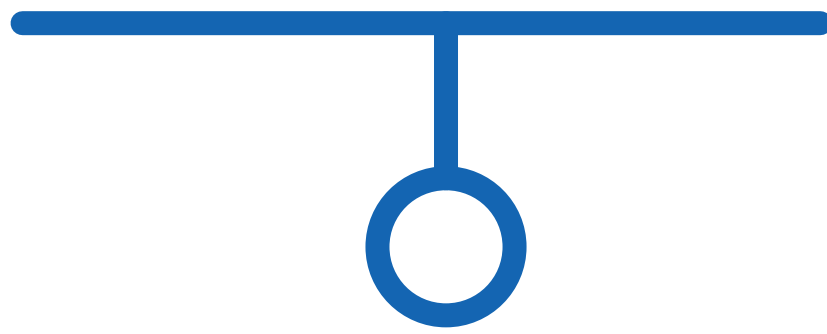


# How to design

**a gas analysis system?**



# 6



## Key points





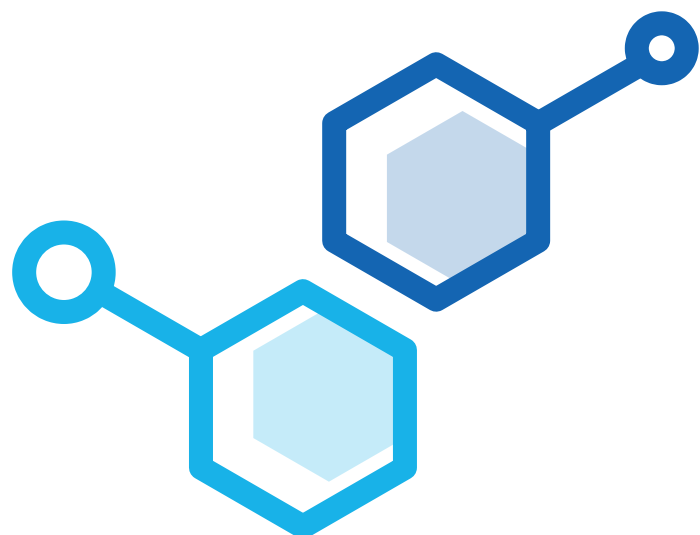
1

**Choose the detection**  
**technology**

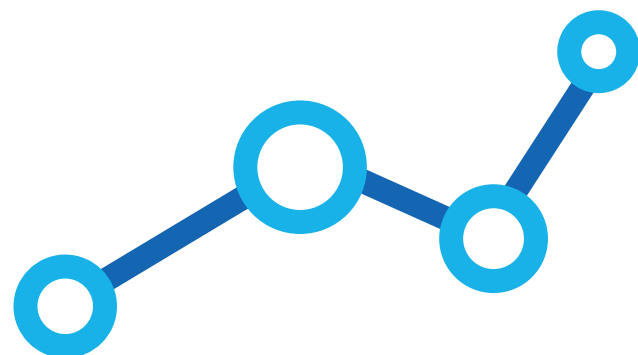


# Consider

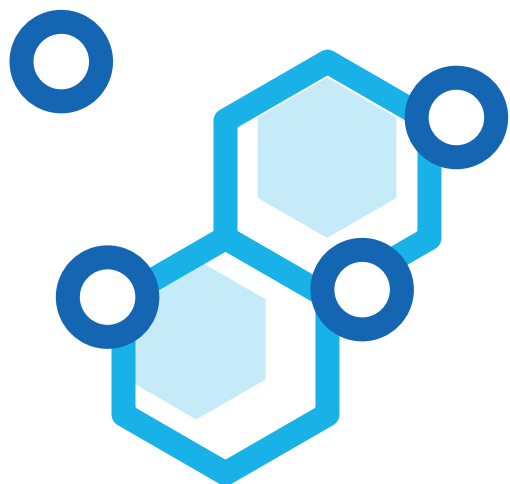
---



**the components  
to be measured**



**the measurement  
ranges**



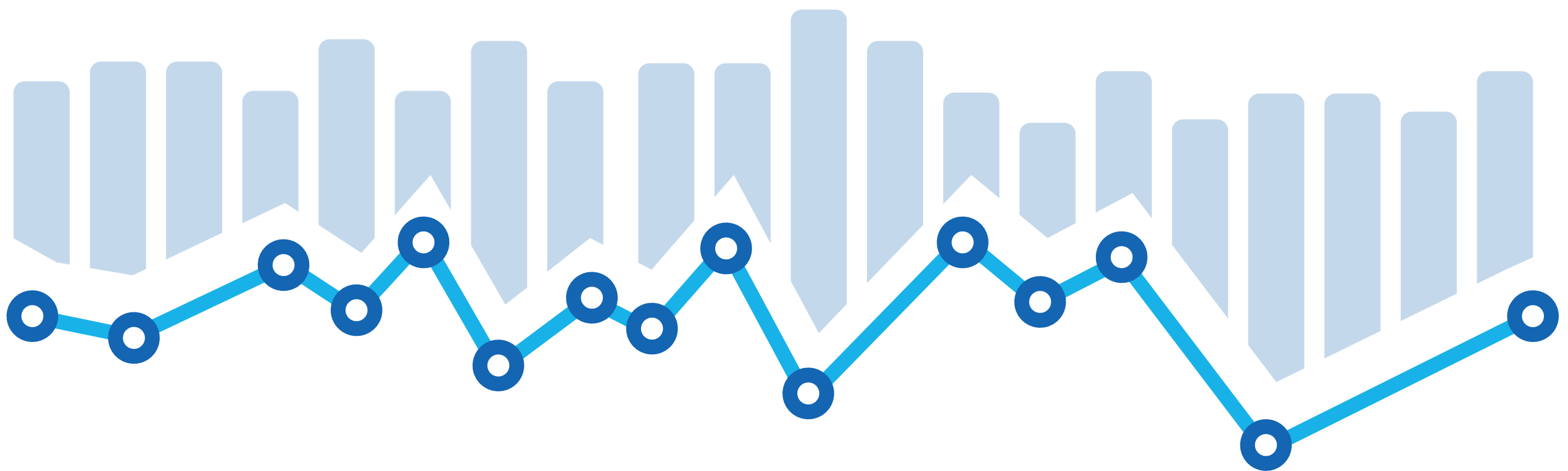
**the interfering  
components**





2

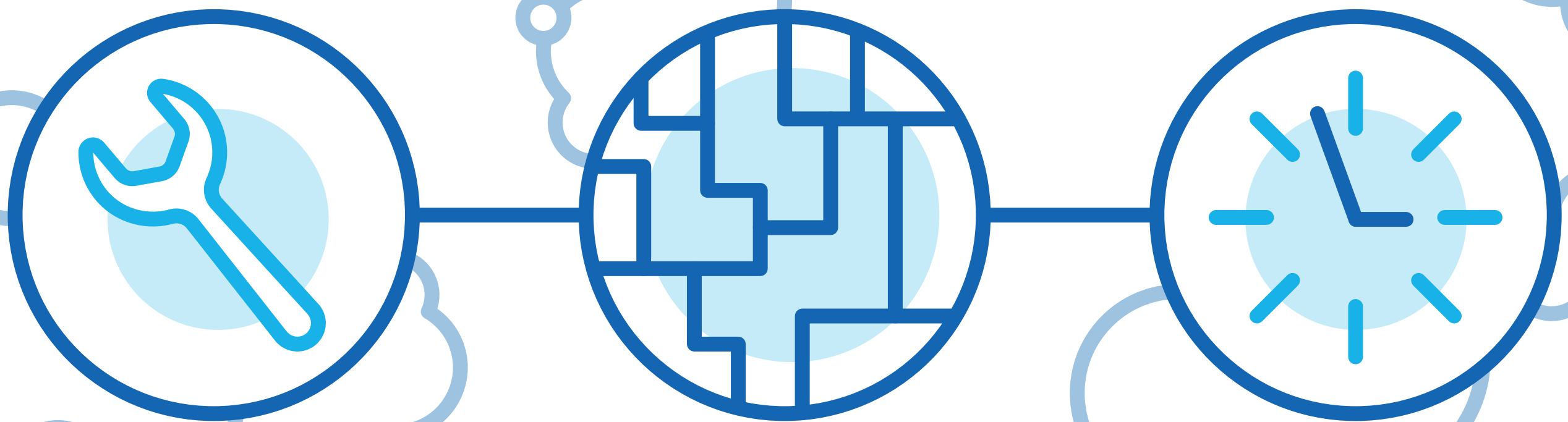
**Measure in situ  
or extractive?**



# Take into account :

---

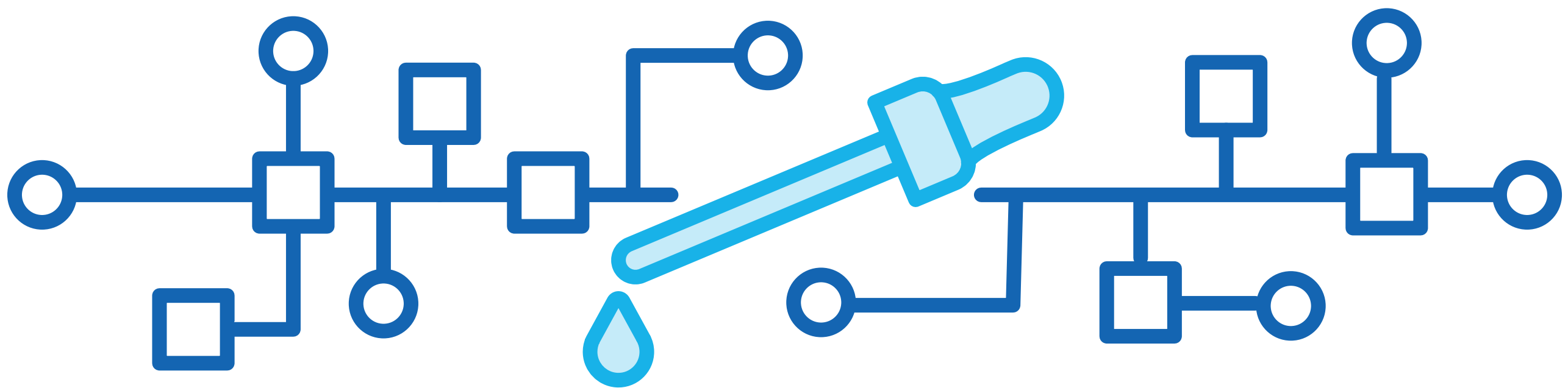
- **The accessibility of the equipment**
- **The space required**
- **The desired response time**





3

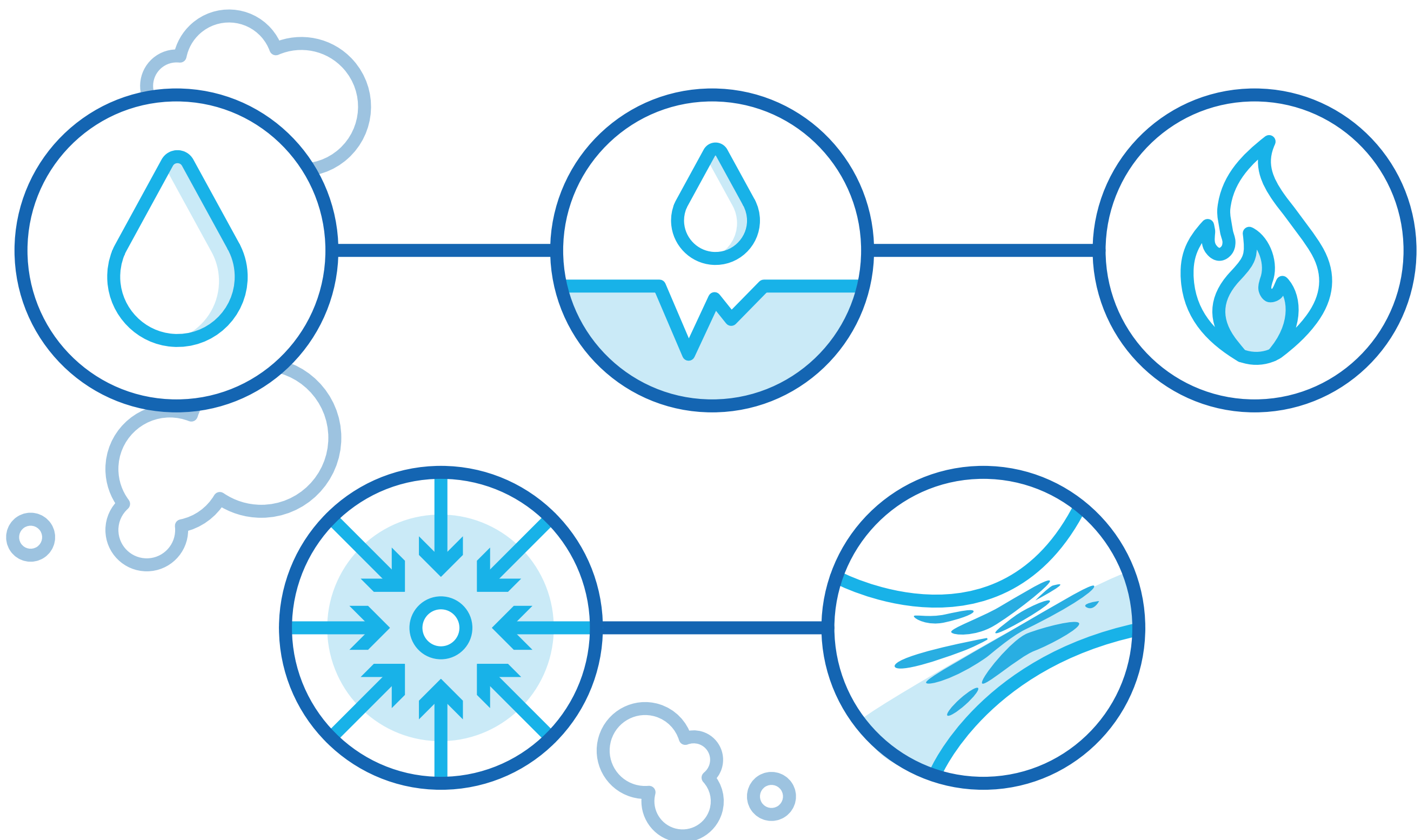
**Design the**  
**sampling system**



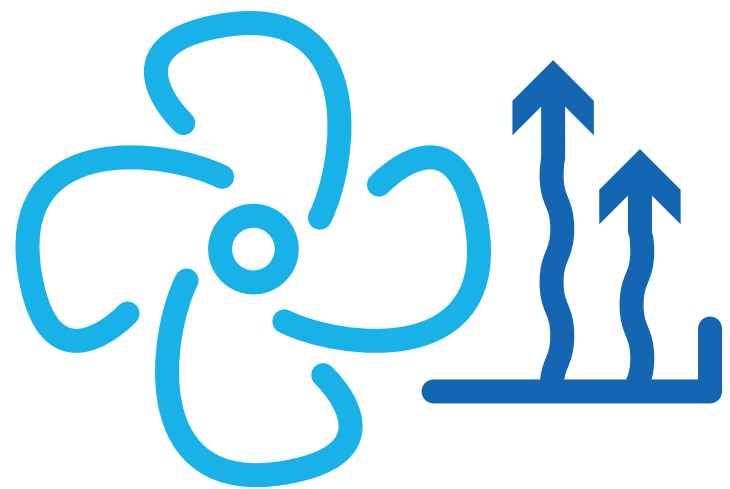
# If the gas is

---

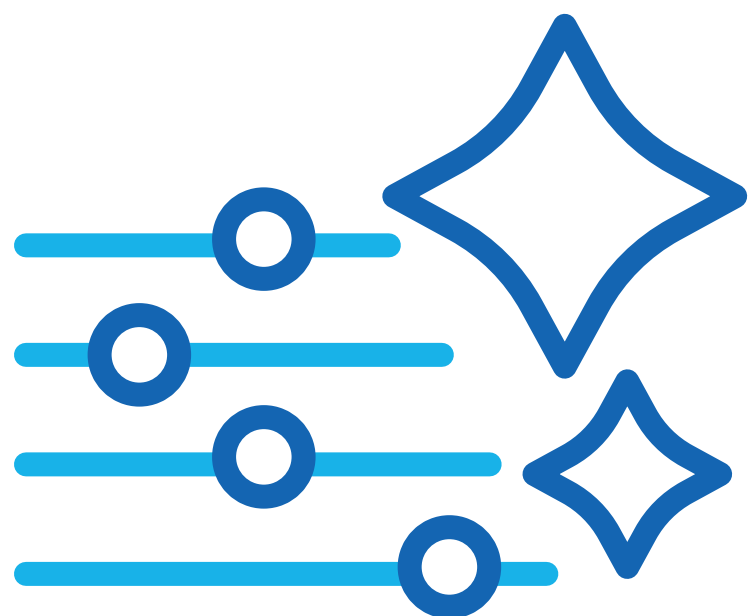
**corrosive, flammable,  
under pressure or clogging**







**Keep hot  
and/or dry**



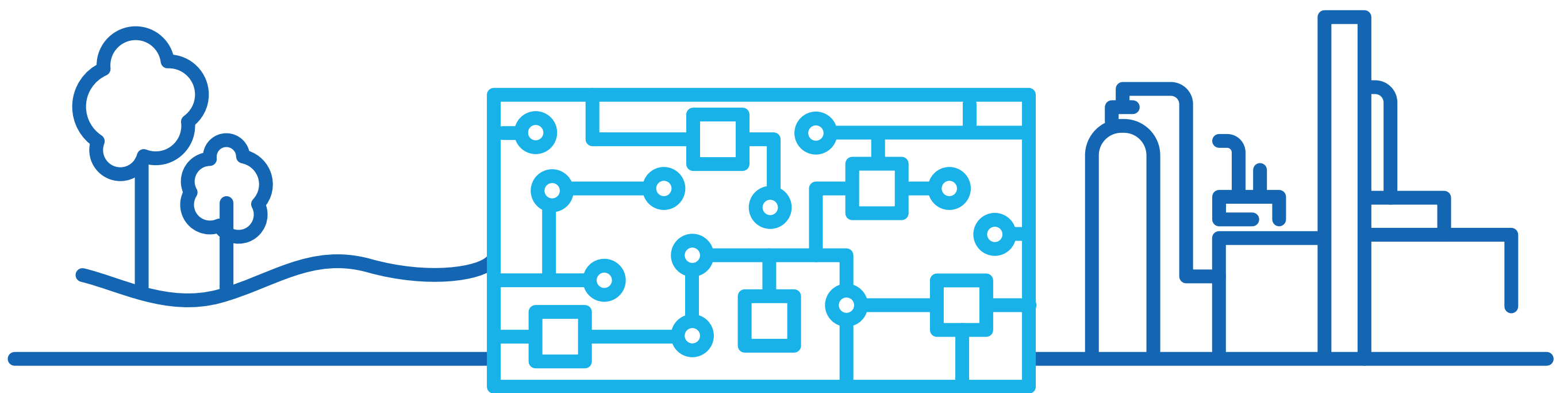
**Filter, wash  
or purge**

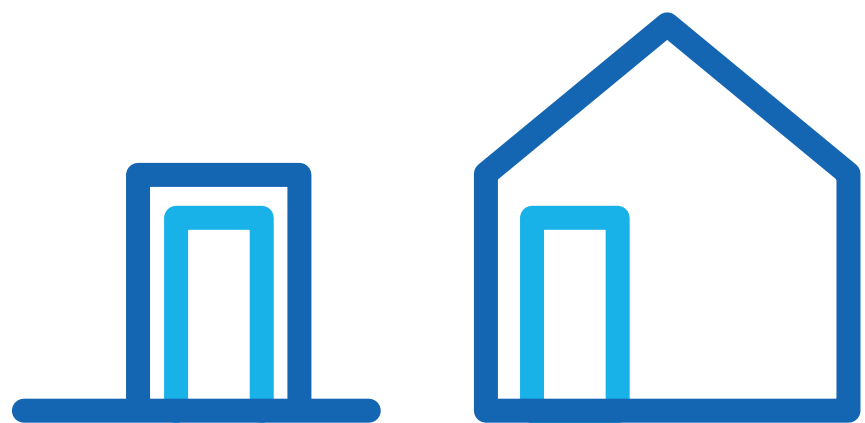


**Pump or  
relieve pressure**

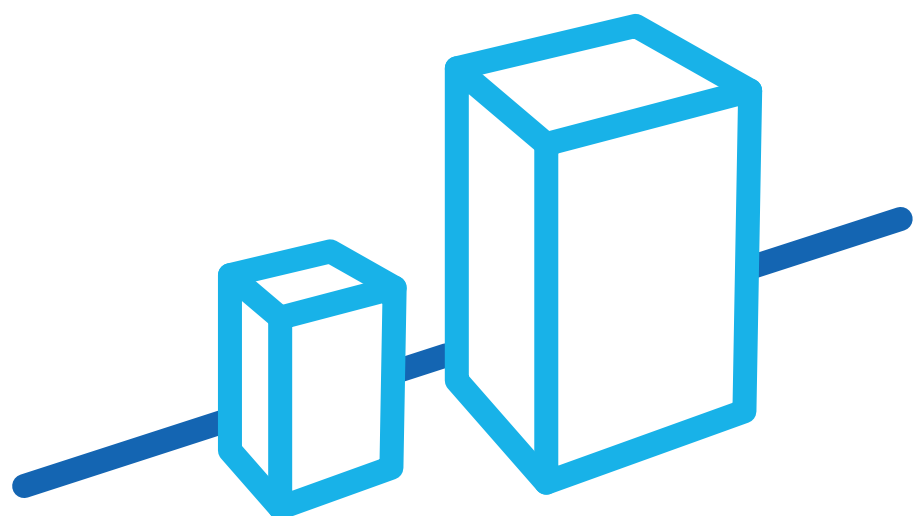


**Adapt the system**  
**to its environment**





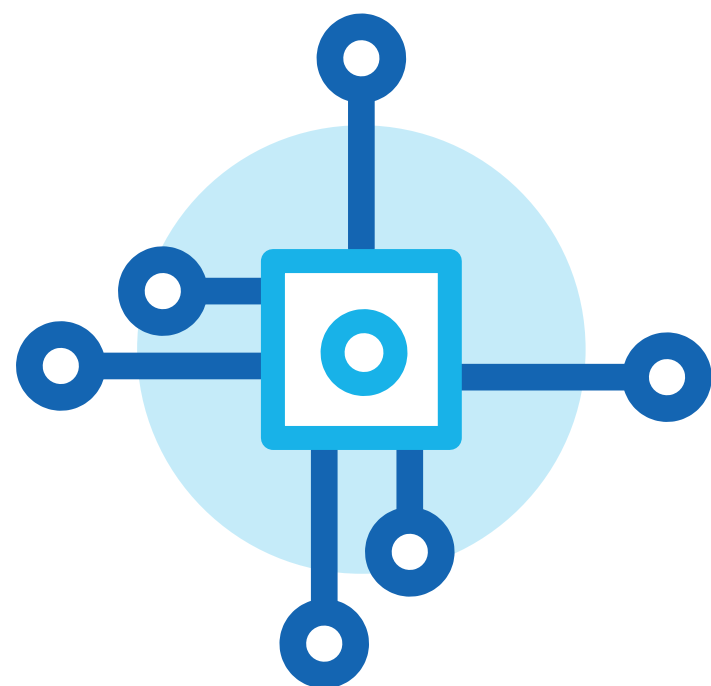
**Indoor or outdoor**



**Stand alone  
or wall-mounted**



**IP, ATEX**



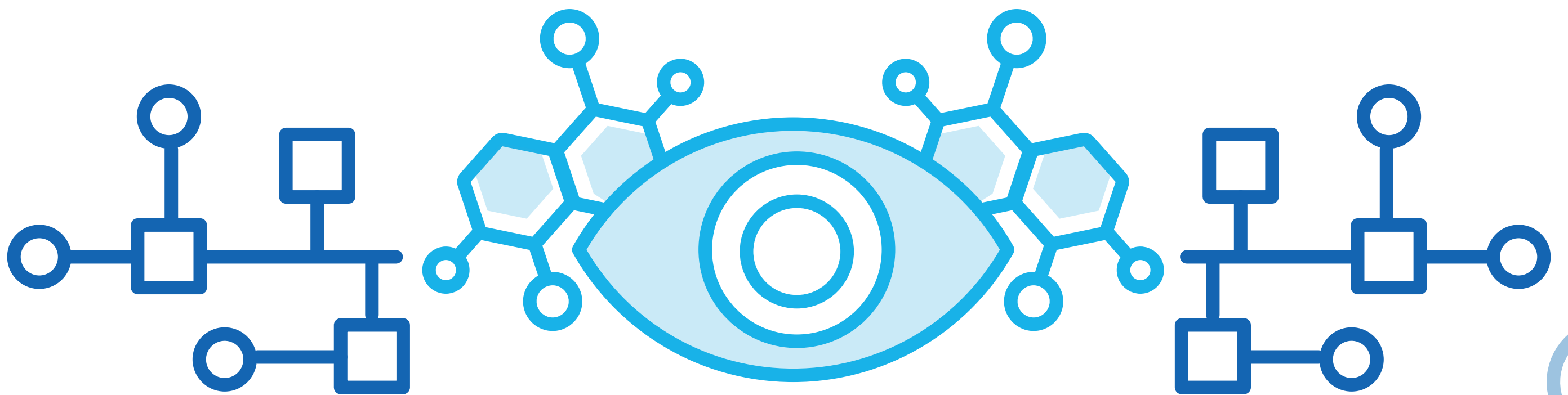
**Utilities available**





5

**Provide a**  
**suitable interface**

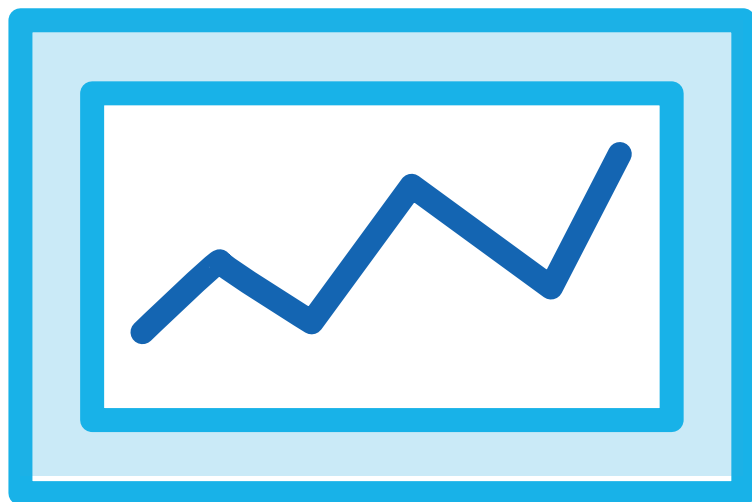


# Transmettez les données

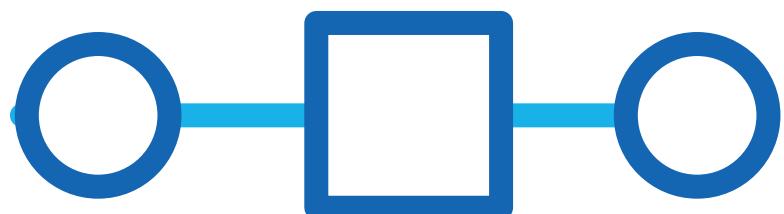
---



**Traditional inputs  
and outputs**



**Touch screen,  
PC or smartphone**



**Bus communication,  
wireless**



**Guarantee durability  
and performance**





**Calibration  
system**



**Access  
to consumables**



**Robust and  
inert materials**

# **Fuji Electric**

---

**has been designing  
and manufacturing  
gas analysers  
since 1954**





**Our experts**  
**guide you from**  
**the design to**  
**the maintenance**  
**of your system**



# Let's build together

**the best system for  
your industrial process**



**[Sales.dpt@fujielectric.fr](mailto:Sales.dpt@fujielectric.fr)**

**+33 (0)4 73 98 26 98**

**[www.fujielectric.fr](http://www.fujielectric.fr)**

