

Features

New V-SFT for easy screen configuration

Read online : <http://monitouch.fujielectric.com/site/vsft-e/vsft-feature-01.html>

- Configuration of Easy-to-view Screens
 - Upgraded Operability
 - Facilitation of Screen Configuration

Configuration of Easy-to-view Screens

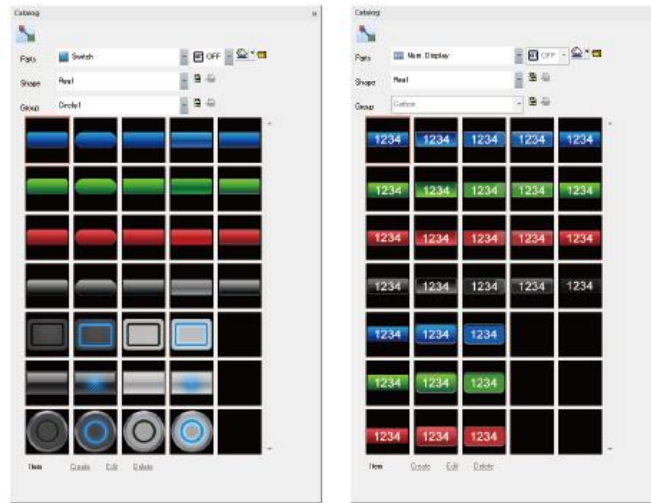
The number of picture icons has been increased, and the icons with plain design have been added. Pick from the wide range of ready-made icons for sophisticated representation.



Configuration of beautiful screens

Simple icons added

Popular simple icons that are used widely on smartphones have been introduced.



Increased picture icons

The number of the picture icons has been increased.



Picture icons with realistic design



Picture icons with simple design

Upgraded Operability

Ribbon Menu

The ribbon-shaped menu bar is available. Enlarged icons are easily visible also improves the operability remarkably.

Home menu



Edit menu



Parts menu

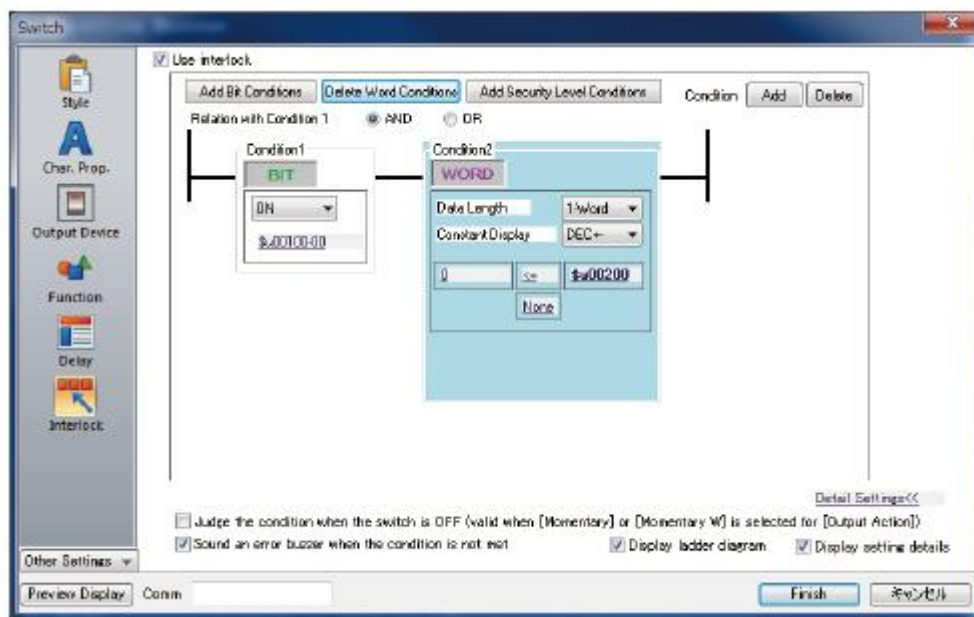


Display menu



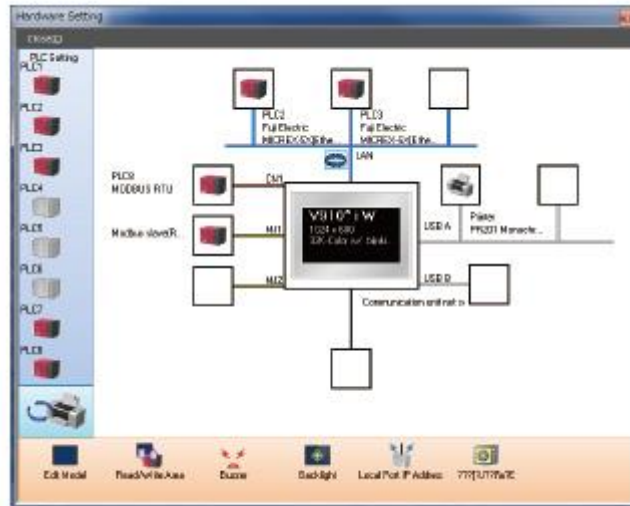
Ladder Diagram for Interlock

Interlocking operations can be set on the ladder diagram, which makes it easy to grasp the settings and set multiple conditions.



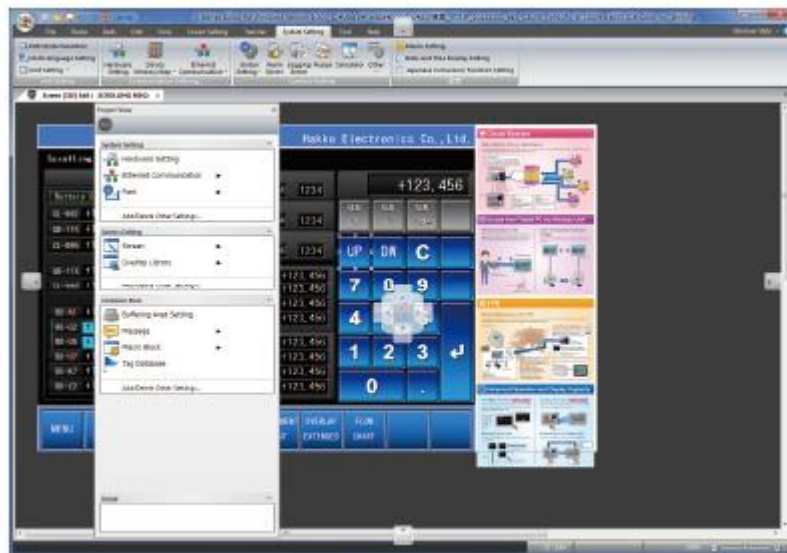
Graphic Indication of System Configuration

The improved hardware setting screen makes it easy to grasp exactly how devices are connected together in the system.



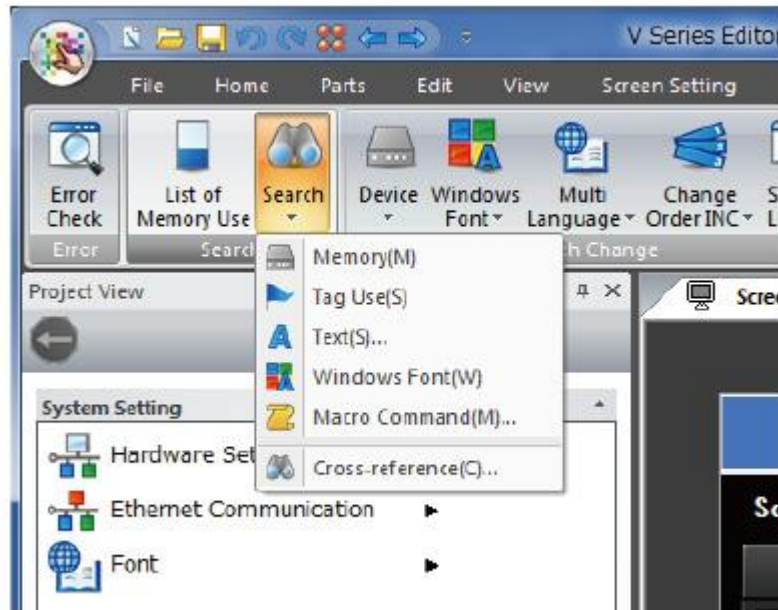
Docking Windows

The project view windows and item view windows can be docked or floated easily.



Integration of Search menu

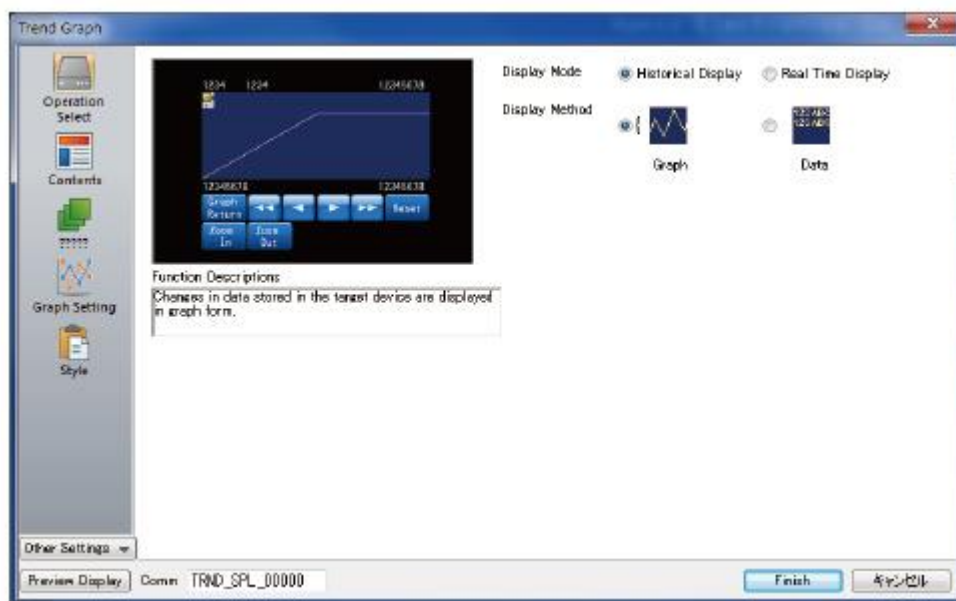
The search menu, which used to be displayed separately, have now been integrated for easy operation.



Facilitation of Screen Configuration

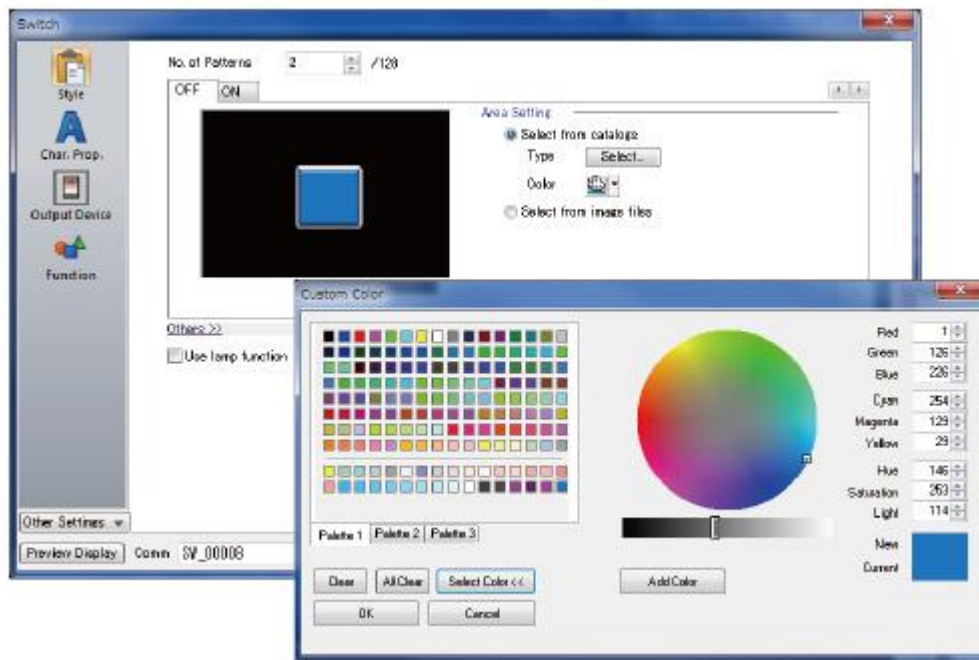
Guided Setting Process

With the help of the clear instructions in the dialog, setting can be conducted smoothly and collectively.



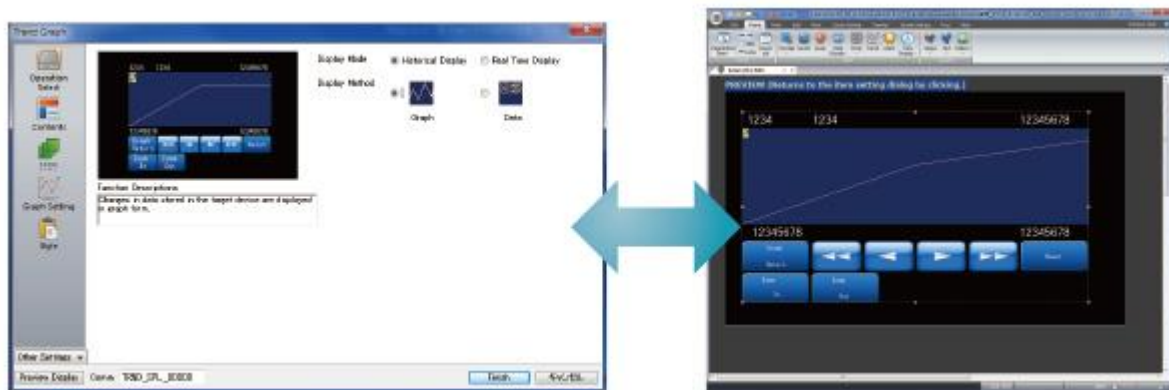
A Wider Range of Colors for Component Parts

65,536 colors are available for components parts.



Visualization of Setting

Set conditions can be confirmed on the preview screen before completing setting. By switching the preview screen and setting dialog, the setting can be confirmed easily even on a PC with low resolution.



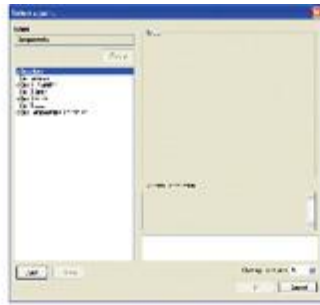
Component Parts

Component Parts facilitate screen configuration

- [Component Parts](#)
- [Features of Component Parts](#)

Component Parts

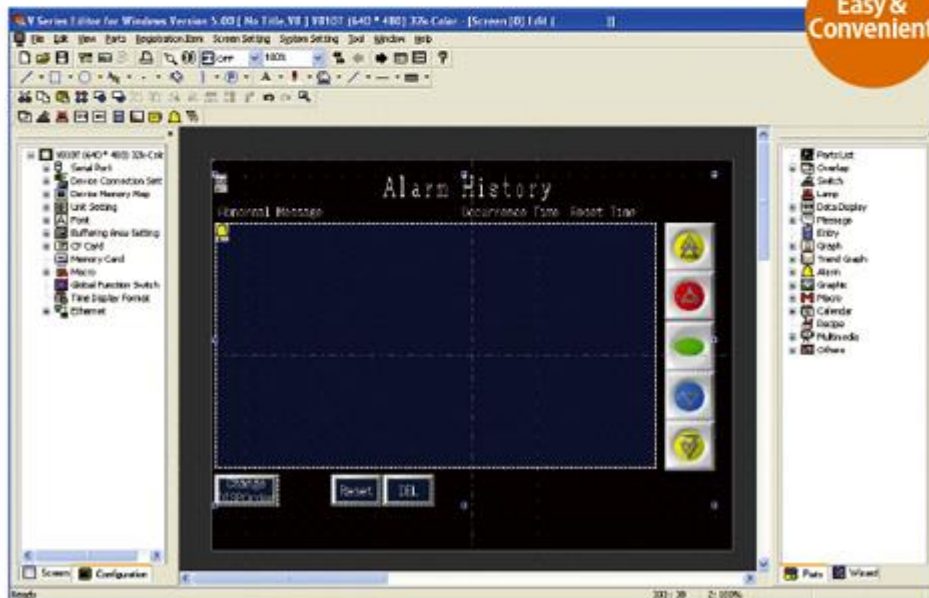
In "Component Parts," various functions and macros have been arranged according to purpose. You can create a functional screen instantly by simply selecting a "Component Parts" from the parts list and arranging it on the screen.



Select an item to set.



Select a part file from the parts list.



Selected parts placed on the screen can be used with no or minimum additional setting.

Features of Component Parts

01 Easy Screen Configuration

You can create multifunctional screens using integrated "Component Parts." When arranging on a screen that contains other messages or setting windows, a "Component Part" can be used regardless of overlapping of setting or windows.



02 Easy Utilization of Resource

"Component Parts" contain all necessary settings for operation, so they don't need any additional setting when used on other displays. They can be reused simply by copying and pasting.




"Component Parts" can be used on other displays simply by copying and pasting, since all settings are collectively copied.

03 Simple Setting View

After arranging "Component Parts," they can be easily used simply by setting address and text.

Example of Setting View ("Component Part" for alarm history)




Memory setting
Example of Setting View ("Component Part" for alarm history)
Set an address for alarm monitoring.

Text setting
Set a text for alarm messages.

Easy and simple
All settings for alarm history can be edited in one menu.

04 Batch Change of Addresses/Text

When the same address or text is used for multiple screens, all the settings can be changed simultaneously on the setting view simply by registering it in the address/text table of a "Component Part."



Only items to be changed are listed.

Screen 1

Screen 2

05 Authorization by Passwords

Setting a password for a "Component Part" prevents the settings for the part from being changed by unauthorized persons. Customers can use a "Component Part" without having to worry about tampering of the setting.




No worry about tampering

06 Various "Component Part"

"Component Parts" with various functions are available. They can be selected from the parts list according to your purpose to configure displays promptly.


Examples of "Component Parts"

Temperature controller




Displays for monitoring and parameter setting of temperature controllers can be made easily.

Inverter



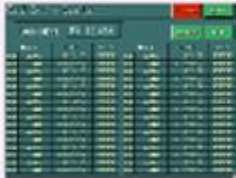
Displays for monitoring and parameter setting of inverters can be made easily.

Robot controller




Displays for monitoring and operation setting of robots can be made easily.

I/O monitor



Displays for I/O monitoring of PLCs can be made easily.

Date setting



Displays for date setting can be made easily.

Requirements

PC	PC/AT compatible machine with Windows
OS	Windows XP/XP64 Edition/ Windows Vista (32bit,64bit)/ Windows 7 (32bit,64bit)/ Windows 8 (32bit,64bit)/ Windows 8.1 (32bit,64bit)/ Windows 10 (32bit,64bit)
CPU	Pentium4 2.0GHz or higher is recommended.
Memory	1GB or more
Hard disk	For installation:2.0GB or more available space
Disk drive	DVD-ROM drive
Display	Resolution 1024x768(XGA) or higher
Color indication	High Color (16bit) or higher
Others	Microsoft .NET Framework 4.0 or 4.5 (If a PC does not have .NET Framework 4.0 or 4.5, Framework 4.0 will automatically be installed on the PC.)