

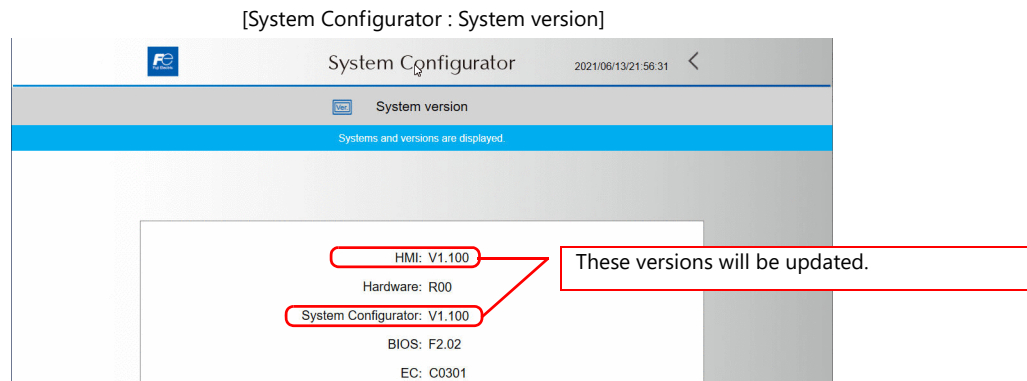
X1 App Updating Procedure

Contents

Overview of the Update	P 1
Diagram of Updating Procedure	P 1
Items to Prepare.....	P 1
Preparing the Update Program.....	P 1
Before Updating X1 App.....	P 2
Checking the Current Program Versions.....	P 2
Checking the Security Function (optional)	P 2
Outline of Updating Procedure.....	P 3
Updating Procedure	P 3
1. Switching to Local Mode	P 3
2. Starting System Configurator	P 3
3. Changing Startup Settings (Operation Mode) to System Configurator.....	P 4
4. Invalidating the Write Filter Setting	P 4
5. Changing the Security Setting to Updating Mode (Only When Using the Optional Security Function)	P 5
6. Running Update Program	P 5
7. Updating List in the Security Setting (Only When Using Optional Security Function).....	P 7
8. Changing the Security Setting to Valid Mode (Only When Using the Optional Security Function)	P 8
9. Changing Startup Settings (Operation Mode) to HMI (Normal use)	P 9

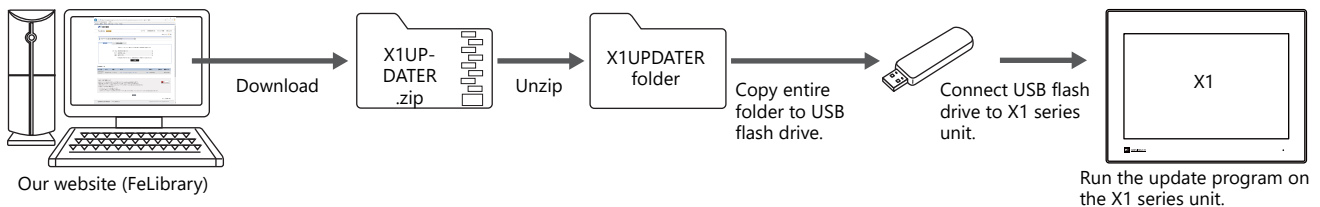
Overview of the Update

Update programs are provided for the X1 series via our website when functions of the X1 app are enhanced or when bugs are fixed. The X1 app can be updated by saving such update programs to a USB flash drive and running them on the X1 series unit.



* The X1 app cannot be updated via V-SFT version 6.

Diagram of Updating Procedure



Items to Prepare

- X1 series unit
- Update program file (downloaded from our website)
- USB flash drive

Preparing the Update Program

1. Download the X1 update program (X1UPDATER.zip) from our website (FeLibrary), and unzip it. [Click here to download.](#) * Membership registration and User login are required to download.
2. Copy the entire "X1UPDATER" folder unzipped in step 1 to a USB flash drive.
3. Connect the USB flash drive to the X1 series unit.

Before Updating X1 App

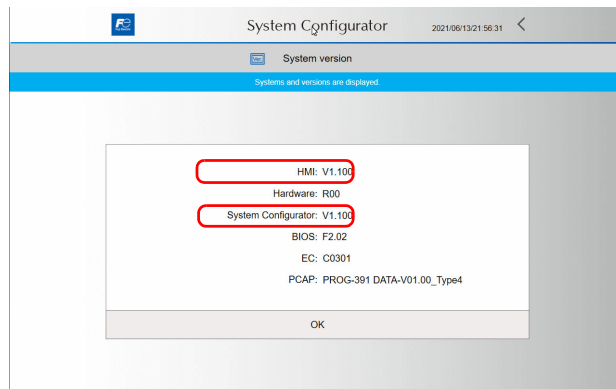
Check the current program versions of the X1 series and whether the optional security function is used.

- If the current version of System Configurator is "V1.100" or later:
Update the X1 app by following the procedures described in this manual.
- If the current version of System Configurator is "V1.000":
After updating the System Configurator to V1.100 with the 202106 version of the X1 update program, update the X1 application by following the procedures described in this manual. For updating procedure, refer to the update manual included with the 202106 version of the X1 update program.
 - * The 202106 version of the X1 update program can be downloaded from our website.

Checking the Current Program Versions

Check the current program versions on the System version screen in System Configurator.

- 👉 For details on starting System Configurator, refer to "1. Switching to Local Mode" P3 and "2. Starting System Configurator" P3.

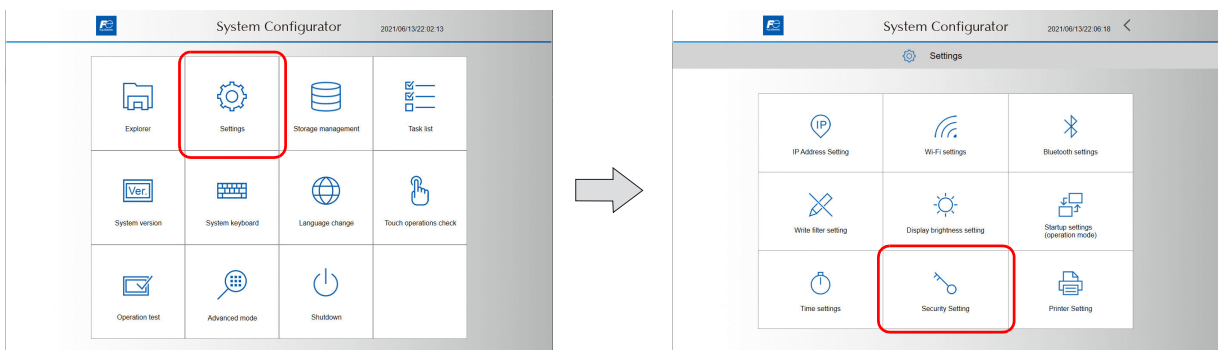


Checking the Security Function (optional)

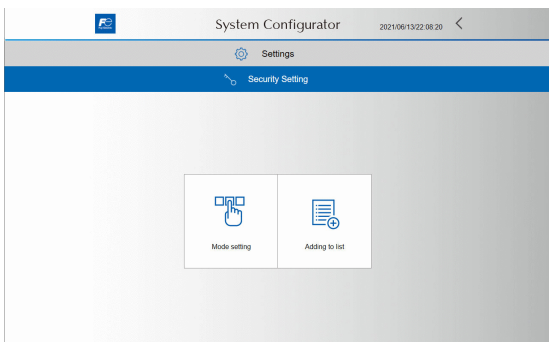
The updating procedure varies depending on whether if the optional security function is used or not. Check the optional security function is used in advance.

1. Press [Settings] → [Security Setting] in System Configurator.

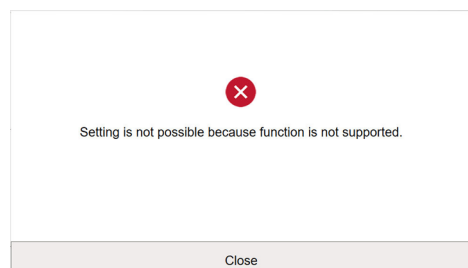
- 👉 For details on starting System Configurator, refer to "1. Switching to Local Mode" P3 and "2. Starting System Configurator" P3.



2. The following screen is displayed if the security function (optional) is used.



* The following message is displayed if the security function is not used.



Outline of Updating Procedure

Follow the steps below to update the X1 app.

1. Switching to Local Mode P 3
2. Starting System Configurator P 3
3. Changing Startup Settings (Operation Mode) to System Configurator..... P 4
4. Invalidating the Write Filter Setting..... P 4
5. Changing the Security Setting to Updating Mode (Only When Using the Optional Security Function) P 5
6. Running Update Program P 5
7. Updating List in the Security Setting (Only When Using Optional Security Function)..... P 7
8. Changing the Security Setting to Valid Mode (Only When Using the Optional Security Function) P 8
9. Changing Startup Settings (Operation Mode) to HMI (Normal use) P 9

Updating Procedure

1. Switching to Local Mode

1. Hold down one corner*¹ of the screen for at least 2 seconds and release your finger when there is a beep. Then within one second, hold down a different corner*¹ for at least 2 seconds to display the system menu.
2. Press the [Local] switch on the system menu. The Local mode screen is displayed. *²



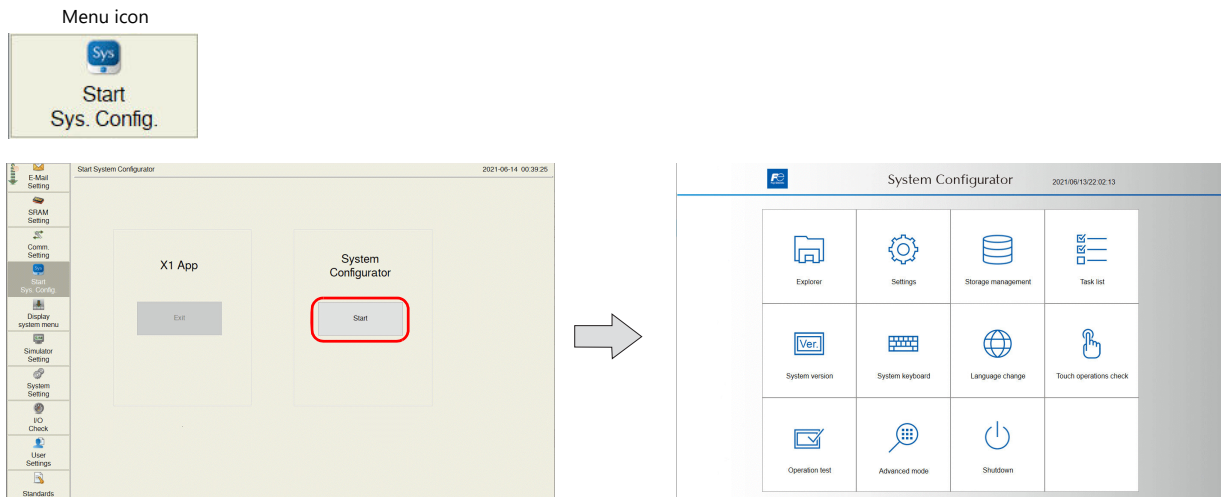
*¹ If any of the items given below are placed in a corner on the screen, the system menu will not be displayed by pressing that corner. Be sure to press a corner where none of these items are placed. If the following items are placed in all four corners of the screen, switch the screen to another one that has open corners and perform the above procedures to display the system menu.

Switches, data display parts with switches, display areas, scrolling messages, slider switches, scroll bars, and table data display parts

*² If the [Local] switch on the system menu is unresponsive, a mode change delay time may be set. In this case, hold down the [Local] switch (for max. 30 seconds).

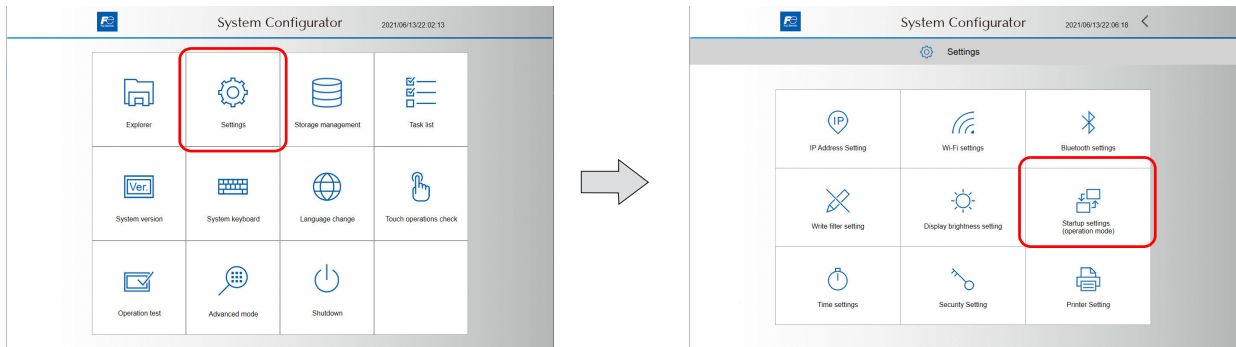
2. Starting System Configurator

1. Scroll the menu icons on the left side of the Local mode screen and press [Start Sys. Config.] to bring up the Start System Configurator screen.
2. Press the [Start] switch to start System Configurator.

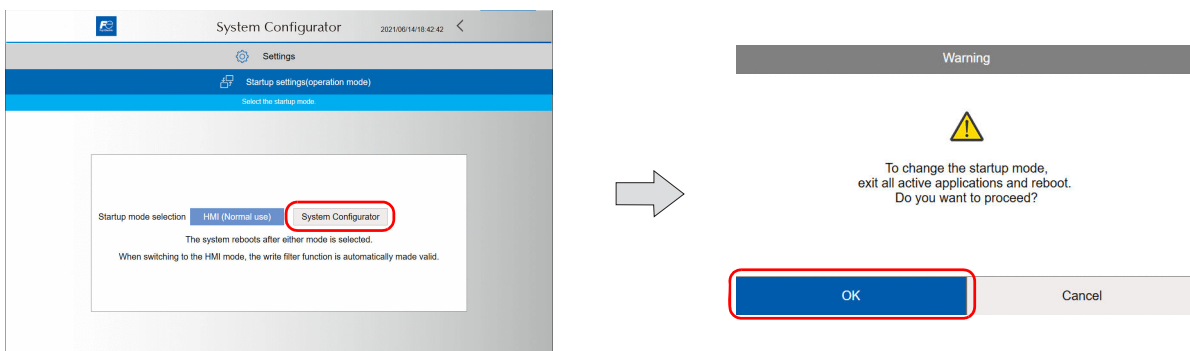


3. Changing Startup Settings (Operation Mode) to System Configurator

1. Press [Settings] → [Startup settings (operation mode)] in System Configurator.

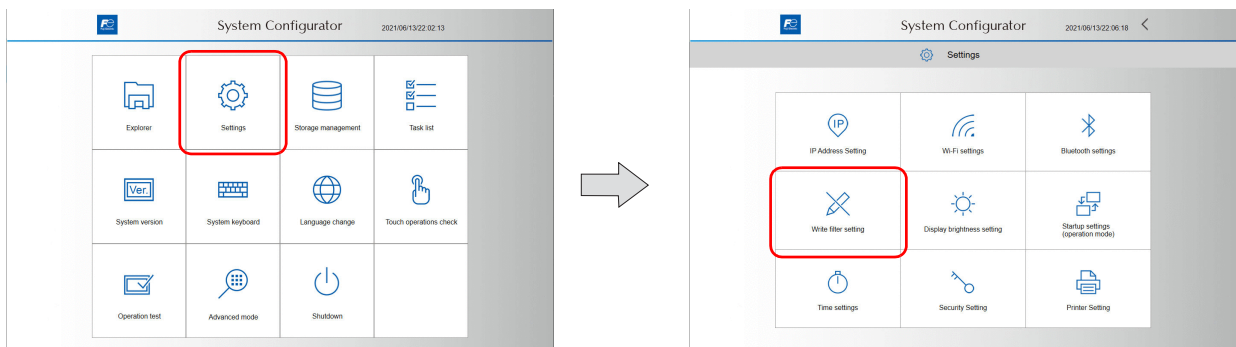


2. Press [System Configurator].
The following dialog appears. Press [OK] to reboot the X1 series unit.

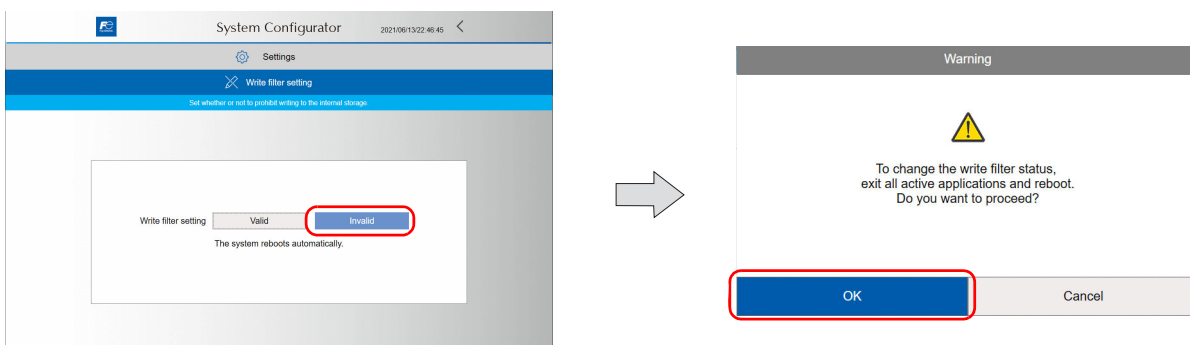


4. Invalidating the Write Filter Setting

1. Press [Settings] → [Write filter setting] in System Configurator.

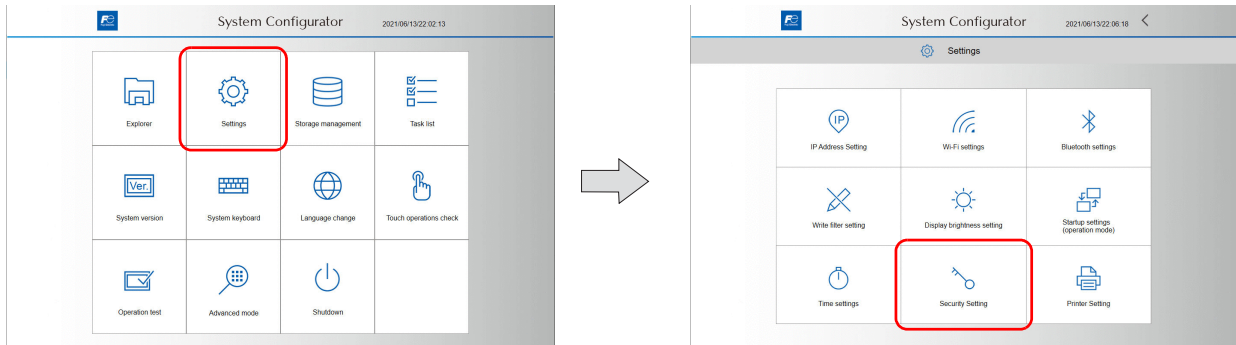


2. Press [Invalid].
The following dialog appears. Press [OK] to reboot the X1 series unit.

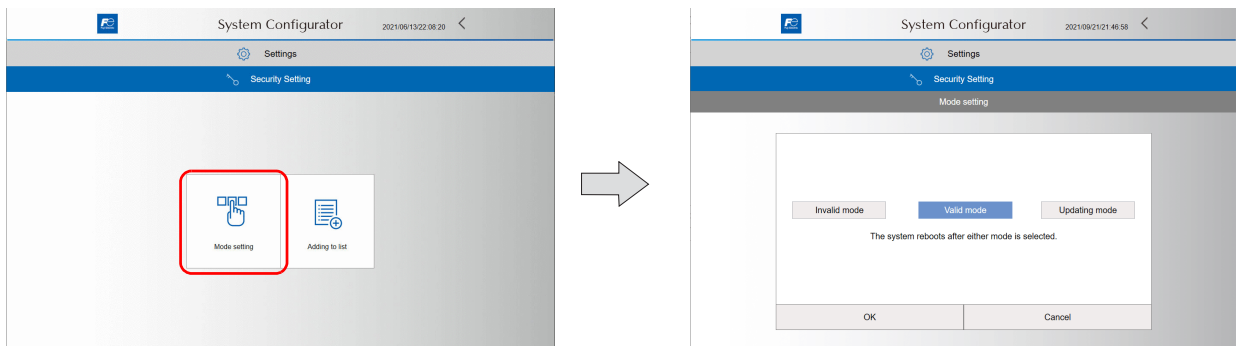


5. Changing the Security Setting to Updating Mode (Only When Using the Optional Security Function)

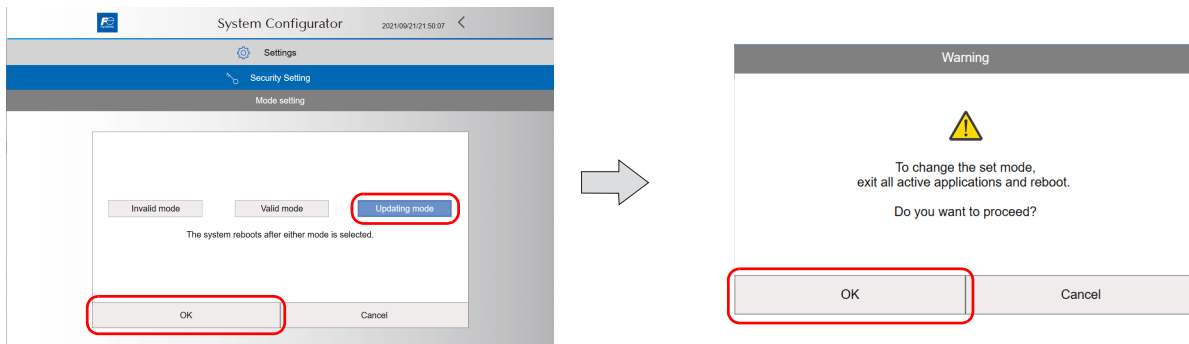
1. Press [Settings] → [Security Setting] in System Configurator.



2. Press [Mode setting].

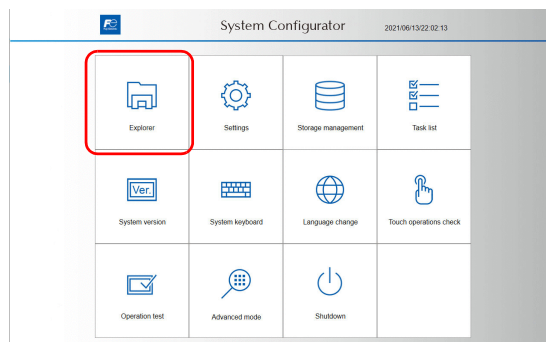


3. Press [Updating mode] → [OK].
The following dialog appears. Press [OK] to reboot the X1 series unit.

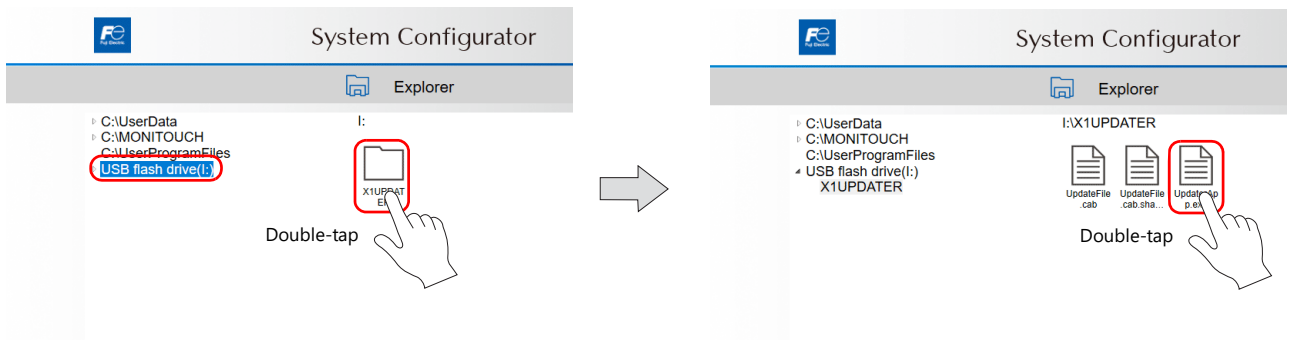


6. Running Update Program

1. Press [Explorer] in System Configurator.



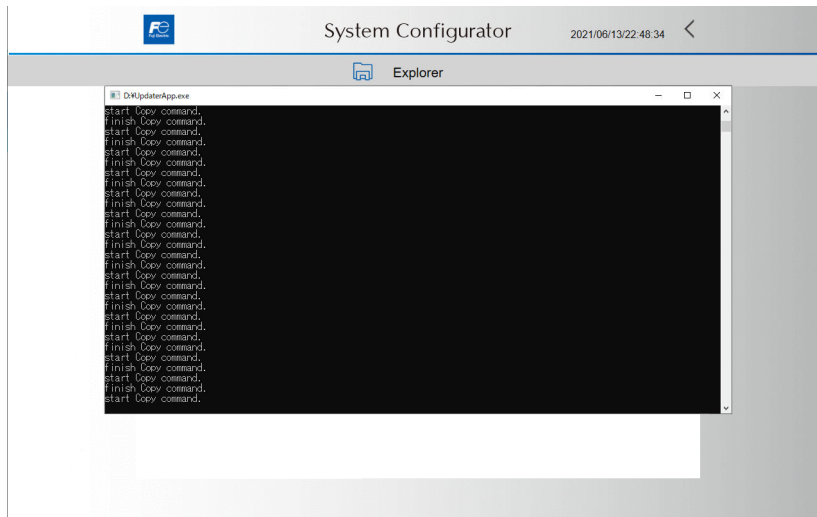
- Open the "X1UPDATER" folder in the [USB flash drive (I:)*]. Then double-tap "UpdaterApp.exe" to run the program.
 - * The drive name of the USB flash drive may differ depending on your use environment.



- After waiting for a while, the following window appears and the X1 series unit reboots.

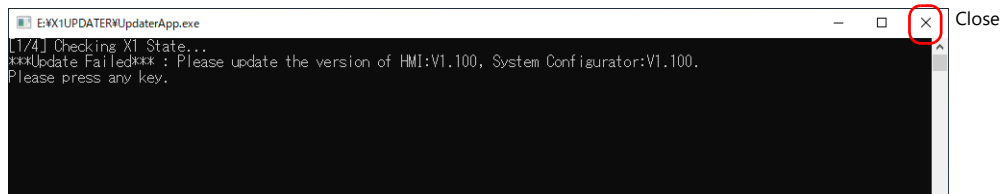


Do not touch the screen or turn off the power before the X1 series unit reboots automatically.



If the following error appears, update the System Configurator to V1.100 using the 202106 version of the X1 update program, and then update the X1 application by following the procedures described in this manual. For updating procedure, refer to the update manual included with the 202106 version of the X1 update program.

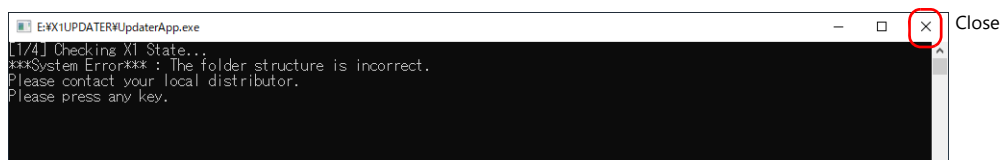
- * The 202106 version of the X1 update program can be downloaded from our website.



If the following error appears, change the security setting to updating mode by referring to "5. Changing the Security Setting to Updating Mode (Only When Using the Optional Security Function)" P5, and run the update program.

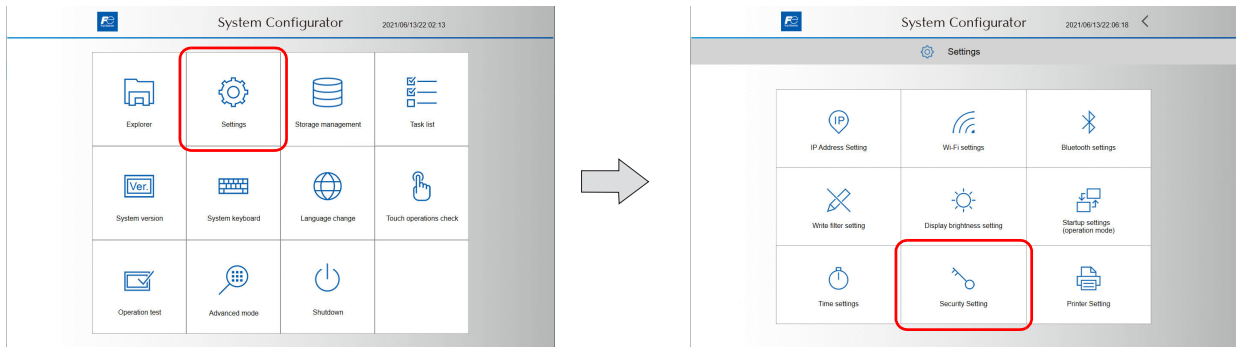


If the following error appears, please contact your local sales representative.

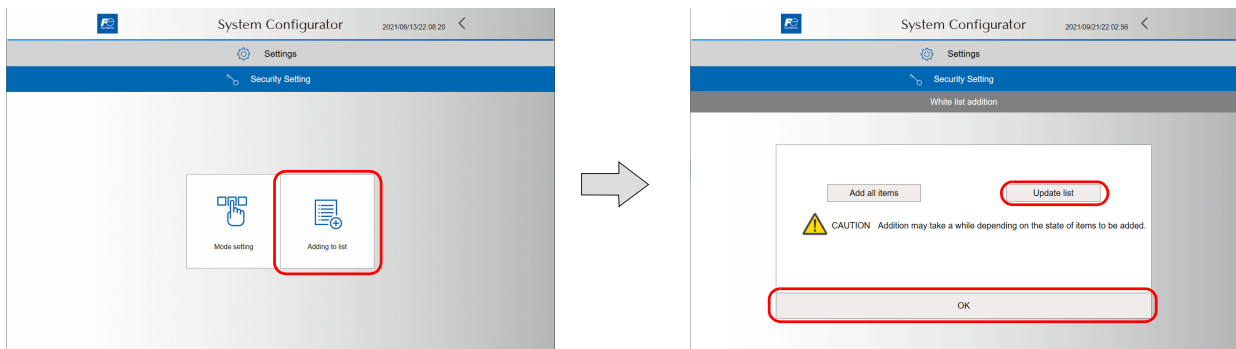


7. Updating List in the Security Setting (Only When Using Optional Security Function)

1. Press [Settings] → [Security Setting] in System Configurator.



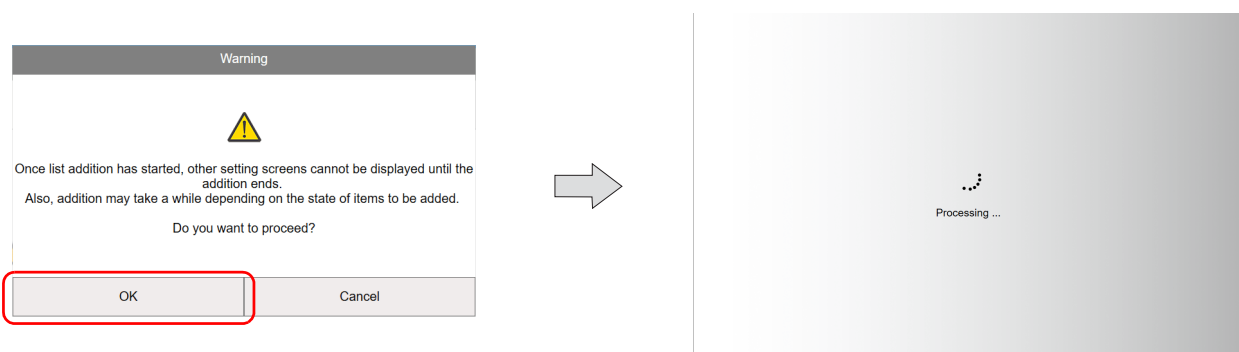
2. Press [Adding to list] → [Update list] → [OK].



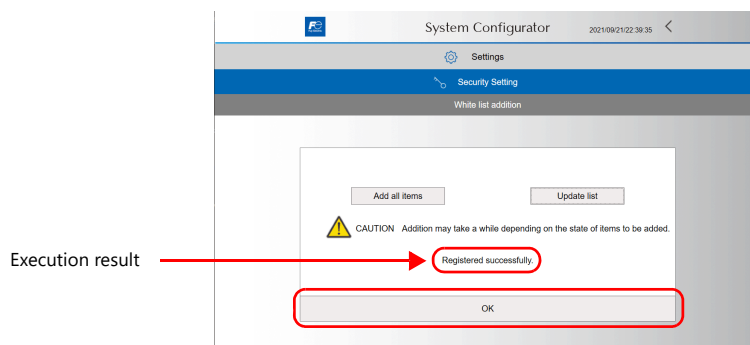
3. The following dialog appears. Press [OK] to start adding items to the list. The [Processing...] screen is displayed while the above addition is in progress. While processing, all other operations are disabled.



Do not turn off the power until the list addition is completed.

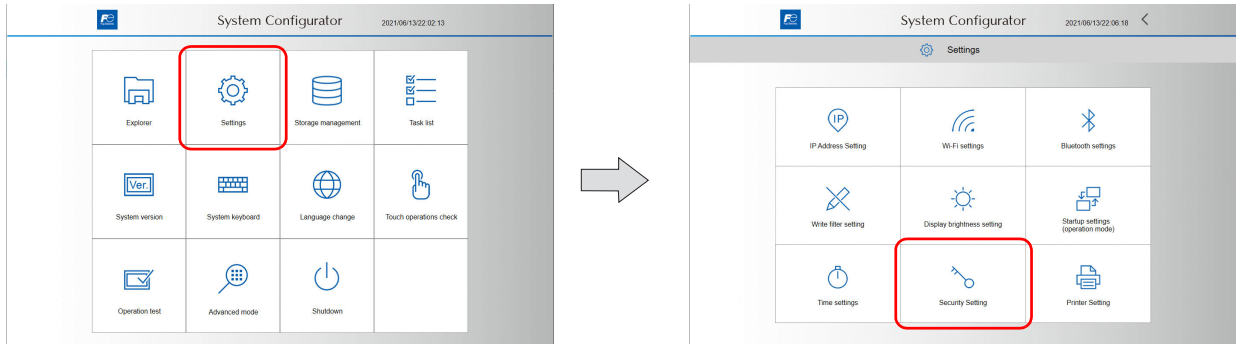


4. When the list addition is completed, the screen returns to the White list addition screen and the execution result is displayed. Press [OK].

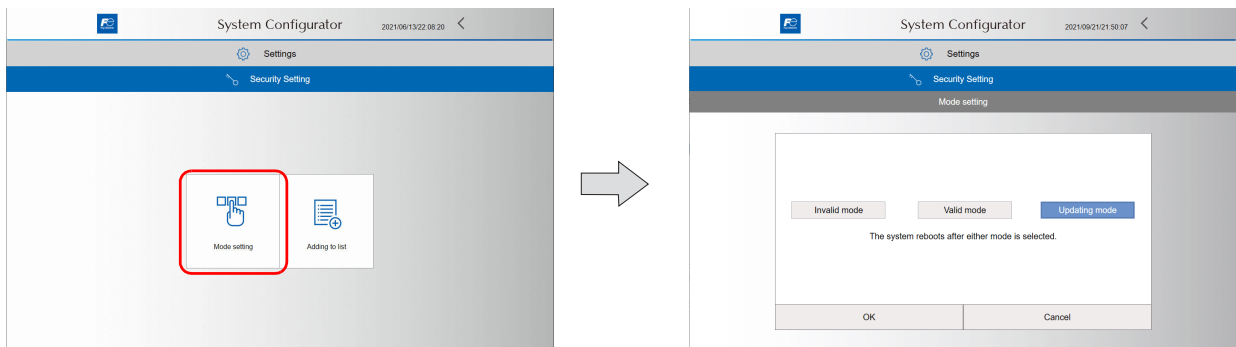


8. Changing the Security Setting to Valid Mode (Only When Using the Optional Security Function)

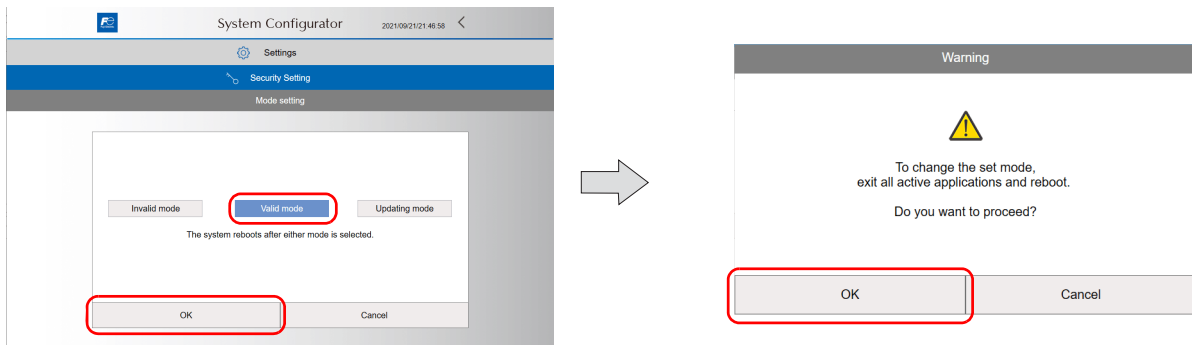
1. Press [Settings] → [Security setting] in System Configurator.



2. Press [Mode setting].

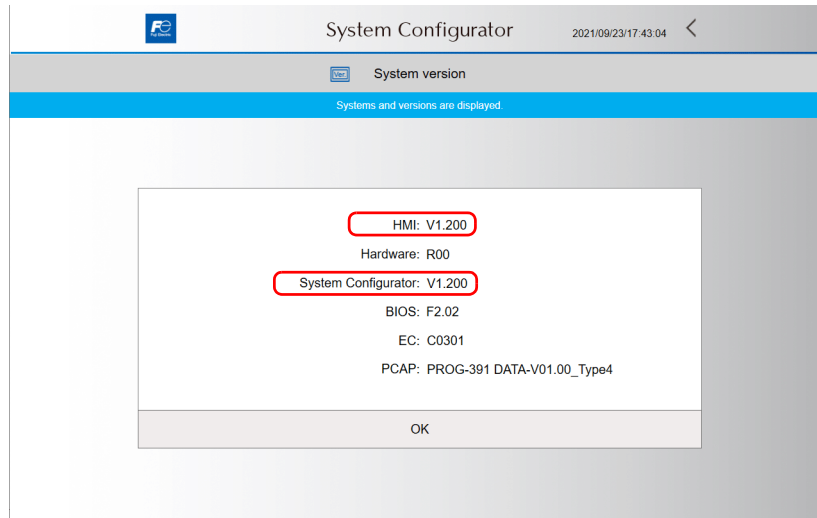


3. Press [Valid mode] → [OK].
The following dialog appears. Press [OK] to reboot the X1 series unit.

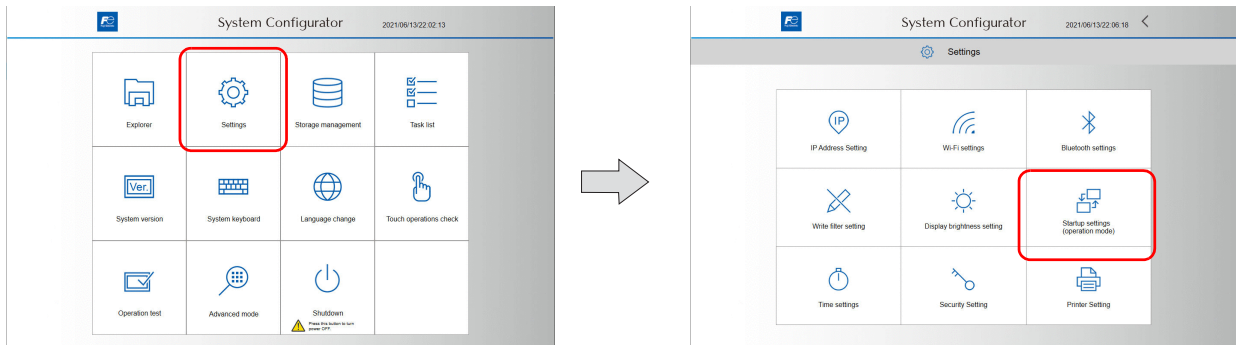


9. Changing Startup Settings (Operation Mode) to HMI (Normal use)

1. Confirm that the program versions have been updated on the System version screen in System Configurator.

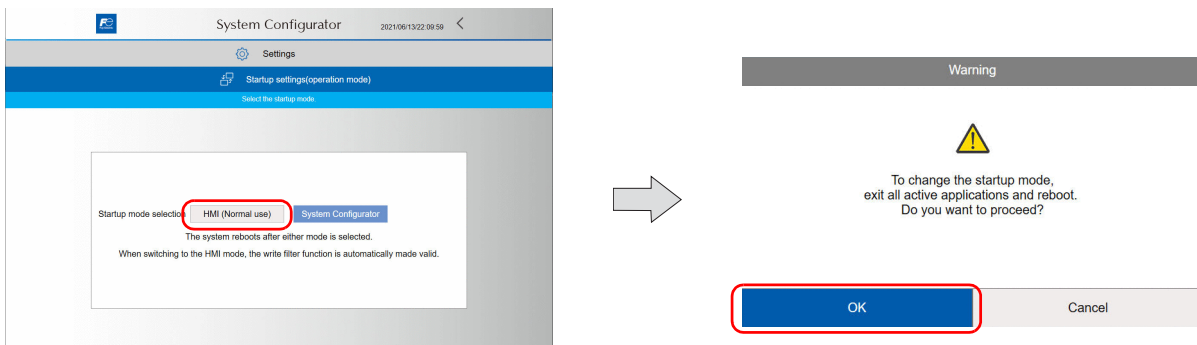


2. Press [Settings] → [Startup settings (operation mode)] in System Configurator.



3. Press [HMI(Normal use)].
The following dialog appears. Press [OK] to reboot the X1 series unit.

* The Write filter setting is automatically changed to [Valid].



This completes the update procedure.



If the X1 update module "X1UPDATER" released in April 2021 is executed on the X1 series unit which has been updated by following the procedures described in this manual, some functions (e.g. OPC UA) may not work properly. If it has been executed by mistake and the OPC UA function does not perform properly, please contact your local sales representative.